



IL PROGETTO FARMACIA DEI SERVIZI



GISCoR²²



Silvia Deandrea (Regione Lombardia)

Per il gruppo di lavoro ONS



La sottoscritta dichiara che negli ultimi due anni NON ha avuto rapporti di finanziamento con soggetti portatori di interessi commerciali in campo sanitario

FARMACIE DI COMUNITA' E SCREENING: OPPORTUNITA' E LIMITI

VANTAGGI:

Equità

Prossimità

Utilizzo della
logistica dei
farmaci

SVANTAGGI

Assenza di
formazione

Vocazione «for
profit»

Esternalizzazione
di una parte del
percorso

LE FARMACIE E LO SCREENING COLORETTALE IN ITALIA



Survey GISCoR 2017 su Centri
Screening: 40% dei programmi
con ruolo attivo delle farmacie



Accordo GISCoR-Federfarma
2017



Farmacia dei Servizi
(Legge 27 dicembre 2017, n.
205 Bilancio di Previsione)

MONITORAGGIO DEGLI ACCORDI



FARMACIE DI COMUNITÀ E PROGRAMMI DI SCREENING COLORETTALE: PRIMO RAPPORTO SUGLI ACCORDI REGIONALI E SUB-REGIONALI

Petra Giulia Della Valle¹, Silvia Deandrea², Francesca Battisti³, William Mantovani⁴, Elena Narne⁵, Carlo Senore⁶

¹ Università degli Studi di Pavia ~ Pavia ~ Italy

² DG Welfare - Regione Lombardia ~ Milano ~ Italy

³ Istituto per lo Studio, la Prevenzione e la Rete Oncologica ~ Firenze ~ Italy

⁴ Azienda Provinciale per i Servizi Sanitari di Trento ~ Trento ~ Italy

⁵ Azienda Zero - Regione Veneto ~ Padova ~ Italy

⁶ AOU Città della Salute e della Scienza di Torino ~ Torino ~ Italy

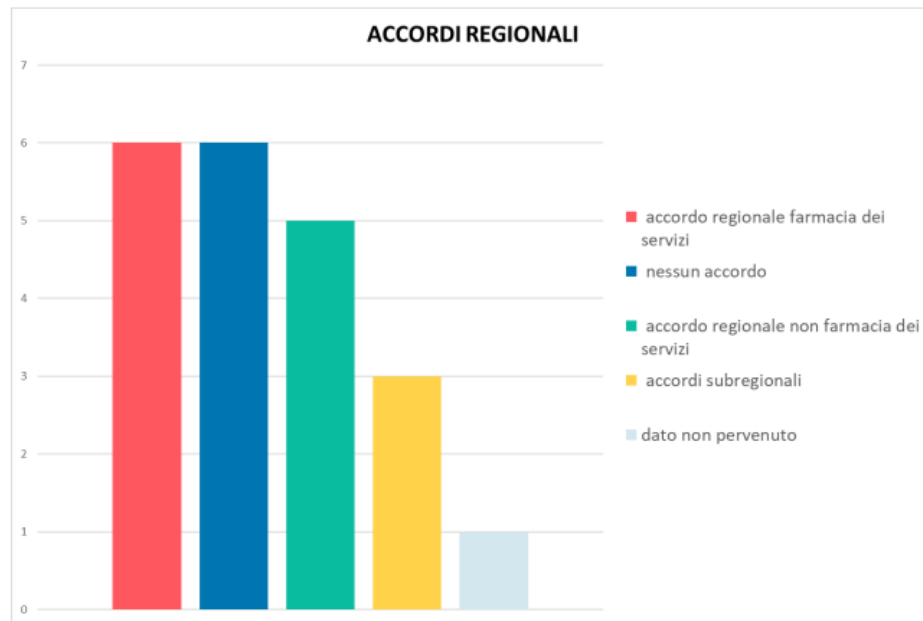
Descrizione degli accordi

Regional agreements

■ data not received on pharmacy services ■ no agreement ■ regional agreement non-pharmacy services ■ regional agreement ■ sub-regional agreement

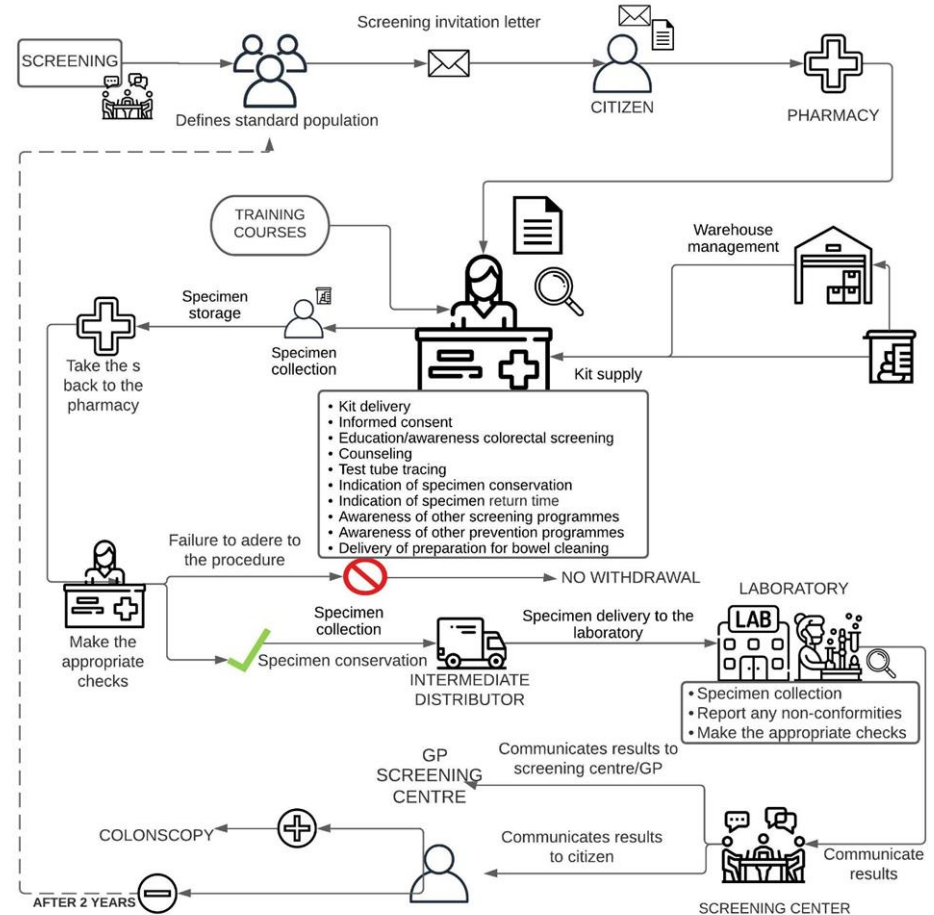


ACCORDI REGIONALI

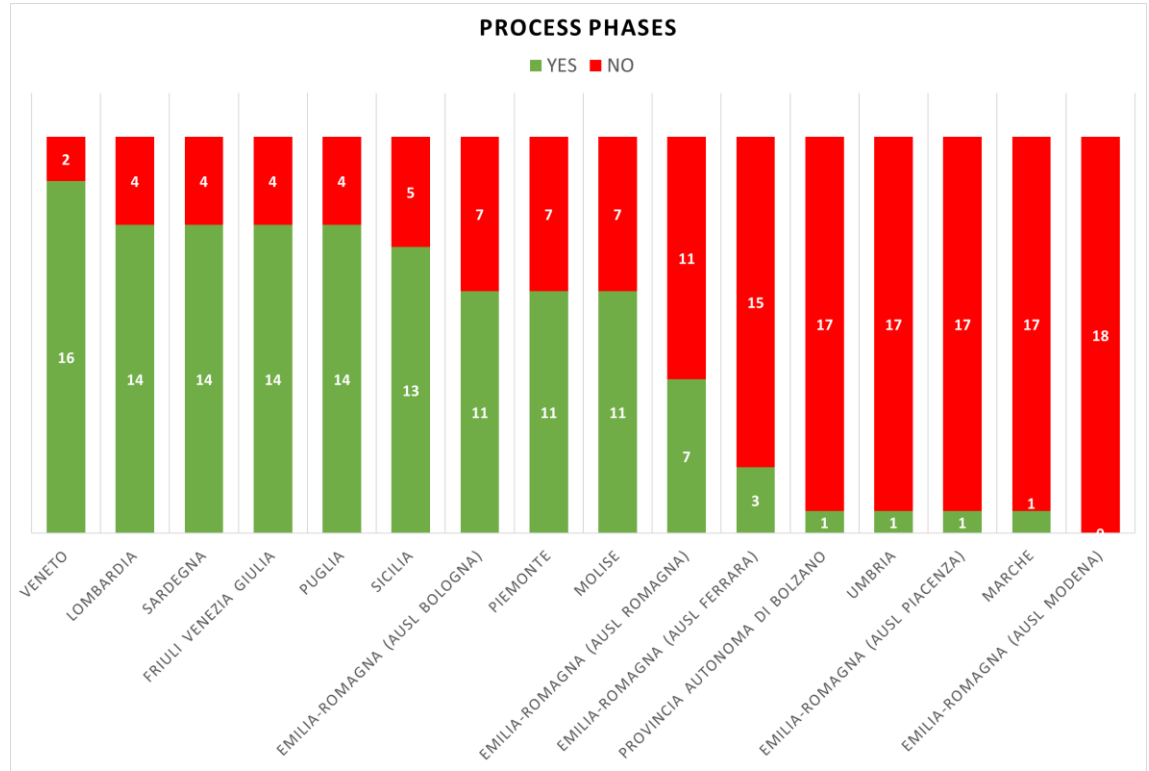


LE FASI DEL PROCESSO

- 18 fasi del processo: core e ancillari



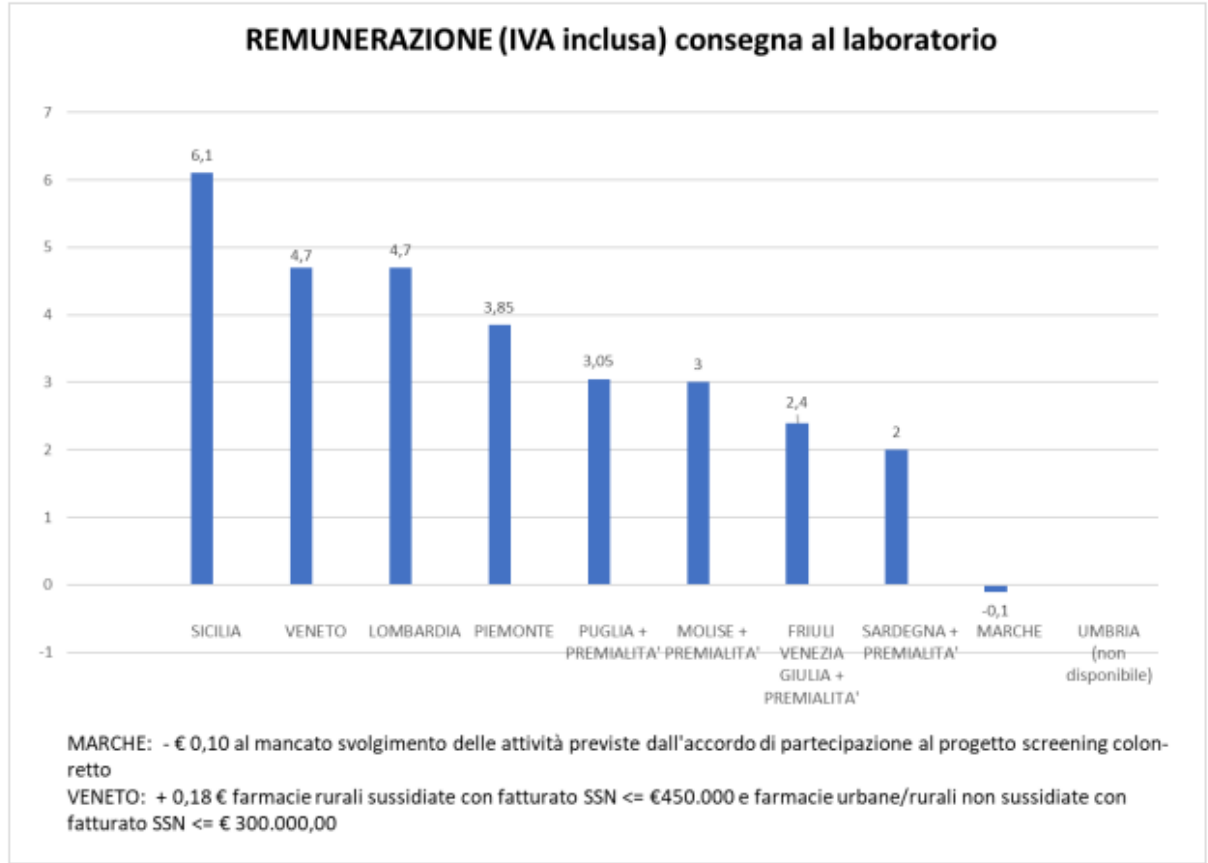
Fasi coperte dagli accordi



DEFINITION OF MAXIMUM TIMING AND RELATIVE STORAGE METHOD FOR THE FOLLOWING

AREA	DEFINITION OF MAXIMUM TIMING AND RELATIVE STORAGE METHOD FOR THE FOLLOWING		
	STORAGE OF THE BIOLOGICAL SAMPLE AT HOME	STORAGE IN THE PHARMACY PREMISES	TRANSPORT AND STORAGE IN THE WAREHOUSE OF THE INTERMEDIATE DISTRIBUTOR
EMILIA-ROMAGNA SUB-REGIONAL	72h from the withdrawal of the kit from the pharmacy, storage in the refrigerator	-	-
FRIULI VENEZIA GIULIA	24h from sample collection in the refrigerator or in a cool place	-	48 h from the withdrawal from the pharmacy.
LOMBARDIA	48 h from sample collection	-	-
SARDEGNA	24h from sample collection in the refrigerator	within 24/48 h from the return of the sample by the user, in a cool place	Delivery of samples to the reference laboratory or the collection center(s) indicated by the screening center. Delivery must take place within 24 h of collection at the pharmacy. The storage of the samples during transport takes place, where possible, in the refrigerator or, in any case, in conditions that guarantee the maintenance of the cold chain; if the samples remain overnight in the distributor's deposits. They must always be kept in the refrigerator
SICILIA	1 week from delivery, in the same pharmacy as the collection	-	-
VENETO	48h from the collection of the sample in the refrigerator. always keeping the tube inside the bag (secondary container)	Preservation preferably in the refrigerator, in an appropriate tertiary container that ensures proper storage until delivery to the relevant intermediate distributor. The storage of samples in the pharmacy is only allowed for a stay in the pharmacy not exceeding 24 h	48h if the storage of samples in warehouses is contemplated. The pharmacy must specify, in the agreement with the intermediate distributor. that storage takes place in the refrigerator. The interval between the sample collection at the pharmacy by the intermediate distributor and the delivery of the sample to the laboratory is reduced to 24 h for samples delivered to the pharmacy on Thursday morning, which must arrive in the laboratory by Friday morning

Remunerazione
prevista dagli
accordi regionali



CONCLUSIONI

- Necessario standardizzare a livello almeno nazionale gli standard qualitativi del servizio (gruppo di lavoro GISCoR)
- Importante fare rete tra le Regioni per condividere le esperienze
- Individuare una metodologia di valutazione di impatto degli accordi e condividerla con valutatori e valutati